

WHEATLAND  
ELECTRIC COOPERATIVE

# NEWS



## Wheatland Electric Co-op Inc.

### Board of Trustees

**William Barnes**  
President  
**Wes Campbell**  
Vice President  
**Mark Arnold**  
Treasurer  
**Stacey Addison-Howland**  
Secretary  
**Dan Bonine**  
Trustee  
**Katie Eisenhour**  
Trustee  
**Bob Hiss**  
Trustee  
**John Kleysteuber**  
Trustee  
**Mike Thon**  
Trustee  
**Josh Young**  
Trustee

### District Offices

**Garden City — 620-275-0261**  
2005 W. Fulton, P.O. Box 973  
Garden City, KS 67846  
**Great Bend — 620-793-4223**  
2300 Broadway, P.O. Box 1446  
Great Bend, KS 67530  
**Harper — 620-896-7090**  
906 Central, P.O. Box 247  
Harper, KS 67058  
**Leoti — 620-375-2632**  
N. Hwy. 25, P.O. Box 966  
Leoti, KS 67861  
**Scott City-Main — 620-872-5885**  
101 Main St., P.O. Box 230  
Scott City, KS 67871  
**Syracuse — 620-384-5171**  
206 1/2 N. Main  
P.O. Box 1010  
Syracuse, KS 67878  
**Tribune — 620-376-4231**  
310 Broadway  
P.O. Box 490  
Tribune, KS 67879

### FROM THE MANAGER

## Thank You for Attending



Bruce W. Mueller

I wanted to thank all our members who attended **WHEATLAND ELECTRIC COOPERATIVE'S 73RD ANNUAL MEETING** in Great Bend, Kansas. This year, as last year,

we had to make changes to our normal annual meeting operating procedures due to the COVID-19 pandemic. At the Great Bend location and our other seven remote locations, we practiced:

- ▶ Proper social distancing;
- ▶ Masks were required to enter the facility; and
- ▶ Masks were also required if proper social distancing could not occur.

This was the third year of holding **CONCURRENT REMOTE ANNUAL MEETINGS** across the Wheatland

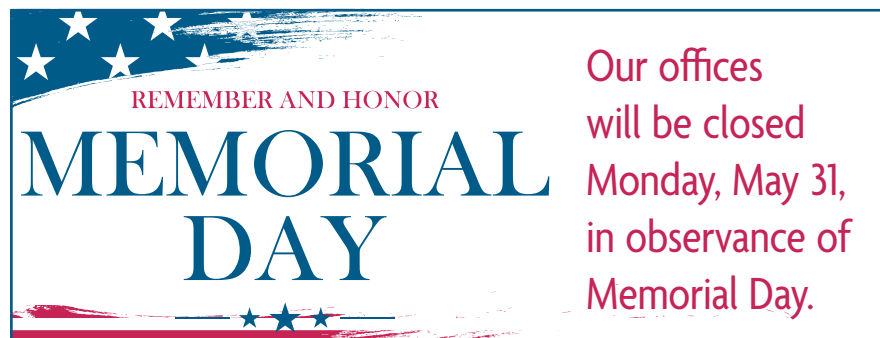
service territory offering the membership and employees the ability to participate in the annual meeting remotely. We had approximately 250 people in attendance, 216 of which were registered members. Those members voted along with 25 proxy votes cast.

This defines exactly what cooperative principle No. 2 is all about: **DEMOCRATIC CONTROL.**

Cooperatives are democratic organizations controlled by their members, who actively participate in setting policies and making decisions. Trustees are elected from among the membership and are accountable to the membership.

We want to thank all the special guests who attended. During the meeting we presented videos of the **2020 FINANCIAL REPORT** and the **2020 ANNUAL SUMMARY**, sharing the 2020

*Continued on page 16H▶*



REMEMBER AND HONOR  
**MEMORIAL DAY**

Our offices  
will be closed  
Monday, May 31,  
in observance of  
Memorial Day.

# 2021 Annual Meeting Highlights

Members of Wheatland Electric reelected three trustees to its 10-member board of directors at our 73rd Annual Meeting, held in Great Bend, Kansas, on April 14, 2021.

Approximately 250 people gathered at the Great Bend Events Center and seven remote meeting locations in our service territory. Remote meetings were held in Scott City, Leoti, Tribune, Syracuse, Garden City, Harper and Caldwell simultaneously, from which members could cast their vote, enjoy lunch and win available door prizes.

In addition to the members present to vote at all our meeting locations, 25 members were also present by proxy.

Members in attendance on April 14 voted to reelect Mike Thon, District 3; Dan Bonine, District 6; and Mark Arnold, District 7. These trustees faced no challengers or nominations from the floor during the April 14 meeting.



Bruce W. Mueller, CEO and general manager, speaks to members gathered inside the Great Bend Events Center on April 14, 2021.



As a thank you, every member attending our annual meeting in Great Bend or one of our seven remote meeting locations across our service territory received a one-of-a-kind cutting board.

District 3 encompasses most of Greeley County, District 6 includes greater Great Bend within Barton County, and District 7 includes multiple communities across Kingman, Harper and Sumner counties.

The annual summary video and financial report are available on Wheatland Electric Cooperative's YouTube channel and at [weci.net/annual-meetings-reports](http://weci.net/annual-meetings-reports).

Next year's annual meeting will be held in Scott City, Kansas. Members with questions about the annual meeting can send a message to [memberservices@weci.net](mailto:memberservices@weci.net).



Our safety demonstration trailer was on full display at this year's 73rd Annual Meeting in Great Bend.

## SCHOLARSHIP WINNERS

We are proud to award up to \$14,000 in scholarships each year to seniors graduating from one of the 13 high schools in our service territory, plus one at large.

SAVANNAH SHIVELY | Argonia

ALEXA LIGHTNER | At-large

KARI DVORAK | Caldwell

KAMON HAYDOCK | Chaparral

OWEN BALMAN | Conway Springs

MARIA RAMIREZ | Deerfield

CAL DUNEKACK | Great Bend

MACIE LEHMAN | Greeley Co./Tribune

ZACCERIE PENKA | Holcomb

BRITTANY GOSCH | Norwich

PAIGE VULGAMORE | Scott Community

MADISON SMITH | South Haven

GUNNAR UPSON | Syracuse

CAMBREE KOEHN | Wichita Co./Leoti

# SERVICE AWARDS

## 5 YEARS

**JULIE STOSS**  
Great Bend

**CORBIN SPELLMAN**  
Garden City

**ROCHELLE IRWIN**  
Scott City

**MICHAEL DOYLE**  
Great Bend

**KRIS LEHMANN**  
Garden City

**TRACI GODDARD**  
Garden City

**DEVAN YORK**  
Harper

**JESUS VILLEGAS**  
Great Bend

**10 YEARS**

**DEREK CALLAWAY**  
Harper

**15 YEARS**

**BARBARA KIRK**  
Scott City

**MARK DINKEL**  
Garden City

**LUKE WEST**  
Garden City

**FRANCIS LOBMEYER**  
Garden City

**MATT HOSLER**  
Great Bend

**20 YEARS**

**MATT SCHEETER**  
Garden City

**25 YEARS**

**DAX WALK**  
Great Bend

## 30 YEARS

**WALT LOVINS**  
Scott City

**CURTIS LAMB**  
Garden City

**KELLEY BURCH**  
Leoti

## 35 YEARS

**DENZIL REED**  
Harper



1. Jillane Koochel, WEC benefits specialist, hands a one-of-a-kind handmade cutting board to members in Great Bend. The cutting boards were created by local high schools served by Wheatland Electric.
2. Over 100 members gathered inside the Great Bend Events Center for our 73rd annual meeting.
3. James Swanson, lineman apprentice from Great Bend, serves a member at this year's annual meeting in Great Bend.
4. An American flag flies high outside the Great Bend Events Center during this year's 73rd annual meeting on April 14, 2021.
5. Crissy Charles from Great Bend was the lucky winner of our grand door prize, a Traeger Grill from Eldridge Fencing in Great Bend.
6. From left: Chris Huber, WEC district manager, and Rick Klaus, WEC director of operations, visit with Larry Detwiler, director of loss control, safety and compliance at Kansas Electric Cooperatives, during the meeting.



DEAR LINEWORKER,

Thank you for all of  
your hard  
work. I think  
you are brave  
to work with  
electricity. It makes  
me feel safe to  
know Great Bend  
can count on you!



FROM:

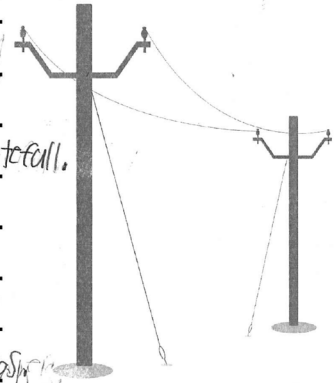
AGE: 8

SCHOOL: Lincoln Elem.

TEACHER: Ramsey

DEAR LINEWORKER,

Thank you for helping  
us. Your job is  
very hard, and  
dangerous and  
we are so grateful.  
Thank you for  
risking your  
life for us you  
guys are like heroes.



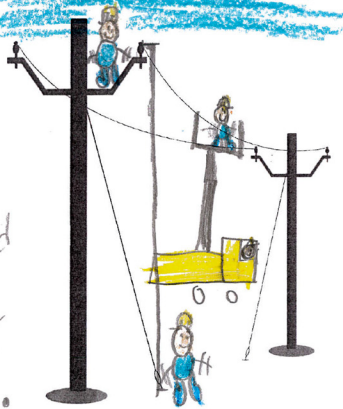
FROM:

AGE: 8

SCHOOL: Wiley Elementary TEACHER: Mrs. Kennedy

DEAR LINEWORKER,

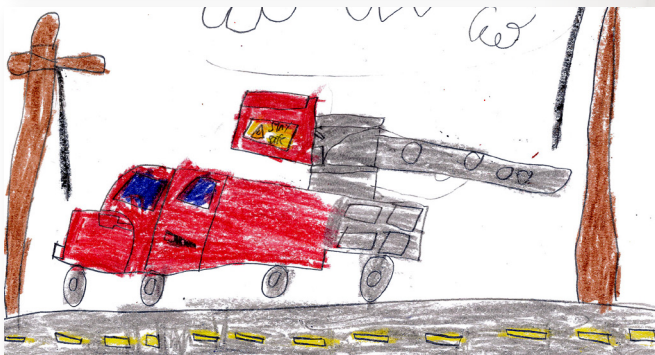
Thank you for all  
your help.  
I love  
the help  
you give  
us. You need  
to stay  
safe. Thank  
you so much.



FROM:

AGE: 7

SCHOOL: Wiley Elementary TEACHER: Mrs. Cornelisen



# Hibbs and Rodriguez to Represent Wheatland Electric at Statewide Conference

Wheatland wishes to congratulate our two Kansas Electric Youth (KEY) Leadership Conference winners: **JUDSON HIBBS**, a junior at Norwich High School, and **TAMARA RODRIGUEZ**, a junior at Scott Community High School.

Hibbs and Rodriguez were selected to serve as our two delegates at the statewide youth leadership conference this summer. Upon high school graduation, each will receive a \$1,000 scholarship.

An interactive experience, the KEY Leadership Conference will be held in a virtual setting this year, providing each high school junior with leadership learning opportunities, engaging speakers and dynamic activities.

For more than 60 years, electric cooperatives across Kansas have recognized outstanding high schoolers by providing a valuable leadership experience for exceptional teens. Networking is always a big part of our cooperative youth programs, as delegates connect with other like-minded, high-achieving youth. Through the 2021 virtual leadership experience, our selected students can get to know their peers across the state through mentor groups and offline chats.

In addition to the virtual conference and local scholarship, each of our delegates is also eligible to apply for an annual \$1,000 state scholarship and a \$10,000 national scholarship, only available to Youth Tour alumni.

Alli Conine, manager of member services and corporate communications (left), presents Tamara Rodriguez, junior at Scott Community High School, with congratulatory balloons to celebrate her selection as a Wheatland Electric representative at the 2021 KEY Leadership Conference.



Regan Reif, Wheatland Electric member services and key accounts manager (left), presents Judson Hibbs (center), junior at Norwich High School, with congratulatory balloons to celebrate his selection as a Wheatland Electric representative at the 2021 KEY Leadership Conference. Also pictured: Carla Hibbs, Norwich High School counselor.



Kansas Electric Youth (KEY) Leadership Conference provides selected junior high school students with leadership learning opportunities, engaging speakers and dynamic activities.

# Sharing Success in the Communities We Serve

We have given away seven grants from our Sharing Success fund since the start of this year. Here are several of our latest grant winners and the community projects that will benefit.

Sharing Success grants are typically \$1,000 awards, given to deserving non-profit organizations. Our goal is to spread the wealth evenly to all corners of Wheatland's service territory, and we encourage all non-profits and community organizations within our service territory to apply for consideration.

Non-profits interested in receiving funding should apply online at [weci.net/sharing-success-program](http://weci.net/sharing-success-program). Questions can be directed to Alli Conine, manager of member services and corporate communications, at 620-874-4563 or [aconine@weci.net](mailto:aconine@weci.net).



**BARTON ARTS MOVEMENT**



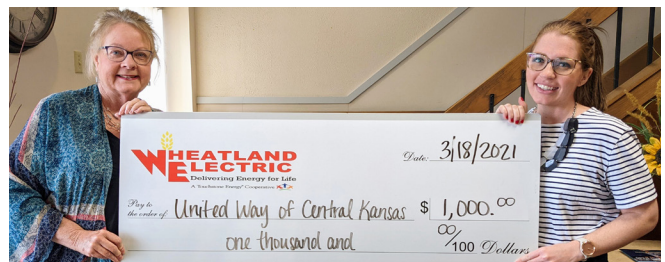
**LITTLE PANTHERS PRESCHOOL**



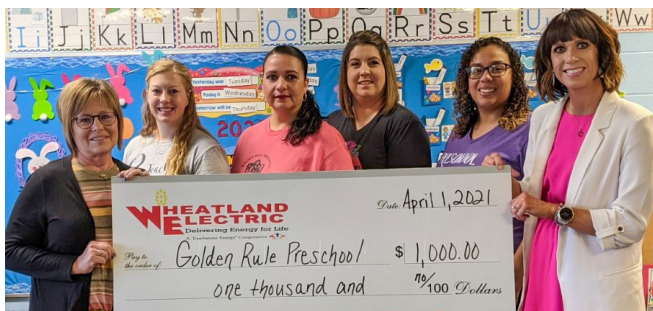
**SCOTT COMMUNITY HIGH SCHOOL**



**CITY OF GREAT BEND**



**UNITED WAY OF CENTRAL KANSAS**



**GOLDEN RULE PRESCHOOL**



**BARTON COUNTY EMERGENCY AID**

## Phase 2 of Rate Adjustment Began April 1

On Jan. 21, 2020, a rate adjustment proposal was presented to the Wheatland Electric Cooperative, Inc. Board of Trustees and approved during an open meeting. This rate adjustment was based on a cost-of-service study completed by Mike Searcy of C.H. Guernsey and Associates in 2019. This rate adjustment was approved to be phased-in over a three-year period: 2020, 2021 and 2022. The second phase of the rate adjustments went into effect on April 1, 2021.

Two integral parts of the rate adjustment are the Energy Charge (per kWh) and the Service Availability Charge. The cost-of-service study found that the previous tariffs relied too heavily on the Energy Charge (per kWh) to cover many of Wheatland Electric's fixed costs. Since energy usage is extremely variable, the current tariffs are

designed to be more fair and more efficient. Ultimately, the Energy Charge (per kWh) was lowered, and the Service Availability Charge was raised. The Service Availability Charge is a fixed monthly charge designed to recover the costs of providing equipment, materials, labor and business overhead necessary to serve each meter, regardless of the amount of electricity consumed. These fixed costs are the same for a member using 10 kWh or 5,000 kWh.

To learn more about phase 2 of the rate adjustment that began on April 1, 2021, please visit [weci.net/tariffs](http://weci.net/tariffs). You will find all three phases of the rate adjustment included in the tariff information on our website. As always, please contact your local Wheatland office with any questions.

## Thank You for Attending Continued from page 16A ►

Wheatland Electric story. You may view the videos at [weci.net/annual-meetings-reports](http://weci.net/annual-meetings-reports).

Wheatland recognized 14 high school senior scholarship winners, who will each receive a \$1,000 scholarship to continue their education. Because the Electric Cooperative Youth Tour and Cooperative Youth Leadership Camp were both canceled for 2021, Kansas Electric Cooperatives developed a KEY Leadership Conference. Two high school juniors were chosen to represent our co-op and will also be awarded a \$1,000 scholarship from Wheatland Electric Cooperative upon high school graduation. During the meeting Wheatland employees were recognized for service awards ranging from five to 35 years.

**IN 2020**, Wheatland Electric paid out **CAPITAL CREDITS** in the amount of **\$1 MILLION. THE WHEATLAND ELECTRIC BOARD OF TRUSTEES** approved an **EARLY CAPITAL CREDIT PAYOUT IN AUGUST 2020 OF \$500,000 AND ANOTHER \$500,000 IN DECEMBER 2020. THIS PAYOUT SHOWED UP AS BILL CREDITS ON THE MEMBERS AUGUST AND DECEMBER**

... WEC is planning to payout \$1 million in capital credits in December 2021, so be sure and look for the 2021 Capital Credits Harvest Day date and come by and visit your local office for some cookies and refreshments.

**2020 ELECTRIC BILLS.** This amount was approved by the board based on the 2019 financials. We also announced that the Wheatland Electric board has approved additional budgeted capital credits to be paid out (based on the 2020 financials). I want to emphasize budgeted, just in case there is some unforeseen financial crisis that would inhibit our ability to pay capital credits. Barring that circumstance, WEC is planning to pay out **\$1 MILLION IN CAPITAL CREDITS IN DECEMBER 2021**, so be sure and look for the **2021 CAPITAL CREDITS HARVEST DAY DATE** and come by and visit your local office for some cookies and refreshments. **THE CAPITAL CREDITS WILL BE PAID OUT IN THE FORM OF BILL CREDITS.**

I want to remind the membership that on April 1, 2021, the second phase of the rate adjustment approved by the WEC membership went into effect with your April electric usage and will be billed on your May 2021 electric bills. Please visit our website at [weci.net/tariffs](http://weci.net/tariffs) where you will find all three phases of the rate adjustment explained. As always, please do not hesitate to contact your local Wheatland Electric office with any questions.

I would like to end with the fact that May is Military Appreciation Month. I hope you will join me this month in pausing to reflect on those who gave the ultimate sacrifice so we can enjoy the freedoms their service affords us in this great country. It's also timely and appropriate to thank those who are integral in our country's response in times of crisis.

**UNTIL NEXT TIME, TAKE CARE**