



An Equal Opportunity Provider & Employer

101 Main, P.O. Box 230, Scott City, KS 67871

620-872-5885 | www.weci.net

WHEATLAND ELECTRIC COOPERATIVE

NEWS

WHEATLAND ELECTRIC COOPERATIVE, INC.

BOARD OF TRUSTEES

Mark Arnold

President

Josh Young

Vice President

Stacey Addison-Howland

Secretary

John Kleysteuber

Treasurer

Maribeth Benker

Trustee

Jeff Clarke

Trustee

Lynn Freese

Trustee

Dustin Stansbury

Trustee

John Sullivan

Trustee

Kevin White

Trustee

DISTRICT OFFICES

Garden City — 620-275-0261

2005 W. Fulton, P.O. Box 973
Garden City, KS 67846

Great Bend — 620-793-4223

200 10th St., P.O. Box 1446
Great Bend, KS 67530

Harper — 620-896-7090

906 Central, P.O. Box 247
Harper, KS 67058

Leoti — 620-375-2632

101 W. F St., P.O. Box 966
Leoti, KS 67861

Scott City-Main — 620-872-5885

101 S. Main St., P.O. Box 230
Scott City, KS 67871

Syracuse — 620-384-5171

206 N. Main, P.O. Box 1010
Syracuse, KS 67878

Tribune — 620-376-4231

310 Broadway, P.O. Box 490
Tribune, KS 67879

FROM THE MANAGER

This is Wheatland: A Defining Year, A Trusted Cooperative

2026 Annual Meeting a Success

Our 2026 annual meeting was more than a gathering — it was a reflection of who we are as a cooperative and the values that continue to guide us forward. This has been a **DEFINING YEAR** for Wheatland Electric Cooperative, Inc. (WEC) built on reliability, trust, service, community and democracy — principles that shape the cooperative you rely on every day.

On April 22, we were proud to welcome 603 attendees across eight locations — Scott City, Leoti, Tribune, Syracuse, Garden City, Great Bend, Harper and Caldwell — representing a 10% increase in attendance over last year. Of those, 423 were registered WEC members. Whether you joined us in Great Bend or participated remotely,

your engagement is what strengthens this cooperative.

For the eighth consecutive year, we hosted concurrent remote annual meetings, ensuring accessibility and participation across our entire service territory. This continued commitment reflects one of our most important cooperative principles: **DEMOCRATIC MEMBER CONTROL**. As a member, you have a voice in how your cooperative operates. Trustees — elected from within the membership — serve on your behalf, guiding decisions and policies that impact our shared future. This year also marked the third-year members could vote for trustee representation by mail, further expanding opportunities to participate.



Bruce W. Mueller

Continued on page 12H ▶

SAFETY TIP OF THE MONTH

Heat exhaustion and heat stroke can escalate rapidly, leading to delirium, organ damage and even death. The human body is normally able to regulate its temperature through sweating until it is exposed to more heat than it can handle. It is recommended that those working in the heat should drink 20 ounces of water before a shift and continue to drink 5-7 ounces every 15 minutes. Ensure you have quick access to water before exposing yourself to this type of environmental condition.

Members Pass Bylaw Changes at 2026 Annual Meeting

Wheatland Electric Cooperative, Inc.'s (WEC) 2026 Annual Meeting, held on April 22, drew **603 ATTENDEES** — including co-op members, special guests and other non-members — across eight meeting locations: Great Bend, Scott City, Leoti, Tribune, Syracuse, Garden City, Harper and Caldwell. Of those, **423** were registered WEC members (including members by proxy).

This year's attendance represents a **10% INCREASE** over last year.

During the meeting, members voted **277-21** in favor of approving proposed amendments to the cooperative's bylaws.

The WEC Board of Trustees had unanimously recommended a bylaw revision to create special rules for how capital credits are handled for very large

electric loads — specifically accounts with loads larger than 50 megawatts.

This revision ensures that appropriate safeguards are in place that protect the payment of capital credits, so existing members are not exposed to undue risk. While very large loads are responsible for all upfront system upgrade costs, their size relative to WEC's system introduces long-term financial and operational considerations.

This year's annual meeting theme, "**THIS IS WHEATLAND: A DEFINING YEAR, A TRUSTED COOPERATIVE,**" celebrated what makes the cooperative whole — every piece, every connection, every member. The past year was truly a defining one, shaped by the core elements of reliability, trust, service, community and democracy — each essential and each connected.

Rooted in the **SEVEN COOPERATIVE PRINCIPLES**, WEC remains focused on serving its members while upholding its core values of service, innovation and community.

Members at all meeting locations were able to ask questions and offer comments in real time as they viewed the primary meeting location in Great Bend. Attendees also enjoyed a catered meal at every location and took home an electric warming mat as a thank you.

Director of Member Services and Corporate Communications Alli Conine also presented awards to 14 high school seniors from across WEC's service territory who were recipients of \$1,000 scholarships. High school juniors who were selected to attend the Electric Cooperative Youth Tour in

LEFT FROM TOP: Maribeth Benker (left), WEC trustee, visits with a guest during the 2026 annual meeting in Great Bend.

The Great Bend High School Madrigals perform prior to the 2026 annual meeting at the Great Bend Events Center, where more than 230 members and guests were in attendance.

Special guests at this year's annual meeting in Great Bend included scholarship recipients, Youth Tour participants and their families.

Members of Scouting America Troop 157 present and retire the colors.

Jim McVay, assistant general manager and general counsel, addresses attendees in Great Bend.



Service Awards

5 YEARS

CRIS KENDRICK
Garden City
KARLY KELLER
Syracuse
MIKE MCVEY
Garden City
GARRETT WILSON
Tribune
JOSH YOUNG*
Leoti

TANNER CRIST
Garden City
SHAJIA DONECKER
Garden City

10 YEARS

ROCHELLE IRWIN
Scott City
KRIS LEHMANN
Garden City
JULIE STOSS
Great Bend
JESUS VILLEGAS-MUNIZ
Great Bend
DEVAN YORK
Caldwell

MICHAEL DOYLE
Great Bend
TRACI GODDARD
Garden City

15 YEARS

DEREK CALLAWAY
Caldwell

20 YEARS

MATT HOSLER
Great Bend
MARK DINKEL
Garden City

FRANCIS LOBMEYER
Garden City
LUKE WEST
Garden City

25 YEARS

MATT SCHEETER
Garden City

30 YEARS

DAX WALK
Great Bend

35 YEARS

KELLEY BURCH
Leoti

Washington, D.C., and Cooperative Youth Leadership Camp near Steamboat Springs, Colorado, later this year were also recognized.

In addition, Mark Arnold, WEC trustee and board president, recognized several employees and trustees for their dedication to the cooperative, ranging from five years to 35 years of service.

The primary new business discussed at this year's meeting was the announcement of trustee election results and the voting on proposed bylaw changes.

An annual meeting summary video, 2025 financial report, and the 2025 annual report, distributed to those in attendance, can now be viewed or downloaded at www.weci.net/annual-meeting.

WEC thanks all members in attendance. We encourage members with questions to contact their local office or send their questions to memberservices@weci.net.

RIGHT FROM TOP: Bruce W. Mueller, CEO/general manager, addresses the crowd at the Great Bend Events Center on April 22, 2026.

Jesus Villegas-Muniz (right), journeyman lineman, and Dalton Regan, apprentice lineman, serve homemade ice cream to attendees at this year's 2026 annual meeting.

Attendees at this year's annual meeting were eligible to win more than 50 door prizes from all meeting locations, including the grand prize — a set of permanent outdoor Govee lights. This year's grand prize winner was Kale Schmidt of Caldwell.



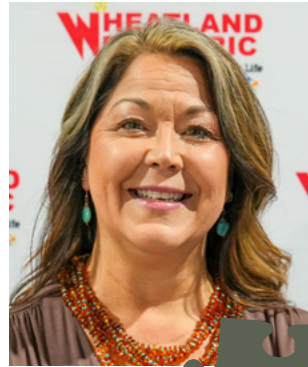
Co-op Members Elect Trustees by Mail



**LYNN
FREESE**



**JOSH
YOUNG**



**STACEY
ADDISON-
HOWLAND**



**JOHN
KLEYTEUBER**

Wheatland Electric Cooperative, Inc (WEC), members have elected four incumbent trustees to serve on its 10-member board.

Results were announced during the **2026 ANNUAL MEETING** held on April 22 in Great Bend, and at seven remote locations across southwest and central Kansas.

This year marked the cooperative's third mail-in trustee election. Members elected:

- ▶ **LYNN FREESE** — District 1, representing Scott and Logan counties
- ▶ **JOSH YOUNG** — District 2, representing Wichita and Wallace counties
- ▶ **STACEY ADDISON-HOWLAND** — District 4, representing Hamilton County, western half of Kearny County, and Prowers County, Colorado.
- ▶ **JOHN KLEYTEUBER** — District 5, representing eastern half of Kearny County, Finney County and Gray County

All four candidates were nominated by WEC's

member-led nominating committee, which includes representatives from each of the cooperative's seven districts across southwest and central Kansas.

Young serves as WEC's board vice president, Addison-Howland serves as secretary, and Kleysteuber serves as treasurer. This is Freese's second three-year term, Young's third three-year term, and Kleysteuber and Addison-Howland's fourth three-year term. Trustees may serve up to six three-year terms on the board.

This year's ballots received by mail represent a total of **6.53%** of the co-op voting membership overall (1,274 returned ballots received from 19,515 eligible voters). Survey and Ballot Systems, an independent third party, conducted this year's election.

Cooperative members voted in 2023 to approve bylaw changes that shifted trustee elections from in-person to mail-in voting.

\$75 Bill Credit *Winners*

Congratulations to the winners of our \$75 bill credit giveaway! These members attended the WEC annual meeting in one of eight meeting locations — we thank you for your engagement and participation in your co-op!

SCOTT CITY
Craig Richards

LEOTI
Gary Graff

TRIBUNE
Betty Gentry

SYRACUSE
David Grilliot

GARDEN CITY
Cindy Crain

GREAT BEND
Nina Elson

HARPER
Roy Davis

CALDWELL
Edith Misak

Scholarship Winners

Wheatland Electric Cooperative, Inc., is proud to announce the following 14 high school seniors will each receive a \$1,000 scholarship.

Scholarships are awarded to local students who attend one of the 13 high schools in our service territory. In addition, at least one at-large scholarship is awarded to a student whose parent/guardian is a member of WEC, but does not attend one of the schools in our service territory.

A panel of the WEC Board of Trustees reviews applications and selects scholarship recipients. Several of these students and their families were recognized during the WEC annual meeting in Great Bend on April 22.

Congratulations to these talented students — we wish you continued success in the years ahead! To learn more about our scholarship program, visit www.weci.net/scholarship-program.



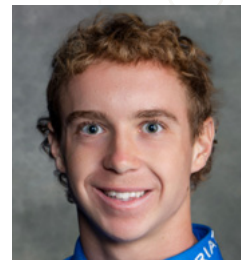
**ABIGAIL
PAXSON**
Argonia High School



**AUDREY
SMITH**
Caldwell High School



**ZACHARY
WELCH**
Chaparral High School



**JOSEPH
BECK**
Conway Springs
High School



**ROSA
ALBA**
Deerfield High School



**OLIVIA
FAHRMEIER**
Garden City High School
(At-Large)



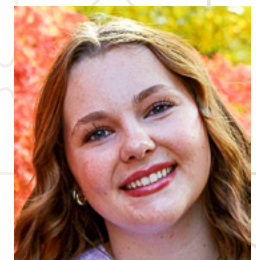
**JACE
POSTLETHWAITE**
Great Bend High School



**PEYTON
JENKINS**
Greeley County
High School



**LAYLA
SCHREIBVOGEL**
Holcomb High School



**ADDISON
DENNING**
Norwich High School



**KAMRYN
MEYER**
Scott Community
High School



**MAE
NICHOLSON**
South Haven High School



**STELLA
SIMON**
Syracuse High School



**JENTRI
PORTER**
Wichita County
High School

*Congrats
to our
winners!*

WEC Wins NRECA's Chesnutt Award for Best Communication Program



SCAN TO VIEW
THE AWARD
VIDEO

Wheatland Electric Cooperative, Inc. (WEC) has received the highest recognition available in the National Rural Electric Cooperative Association's (NRECA) **2026 SPOTLIGHT ON EXCELLENCE AWARDS PROGRAM** — the prestigious **EDGAR F. CHESNUTT AWARD** — for its 2025 Power the Pantry campaign.

The Chesnutt Award is given to the top-scoring entry in the **BEST TOTAL COMMUNICATIONS PROGRAM** category, as determined by judges from nationally accredited universities and communications professionals in the private sector. The award is named for Edgar F. Chesnutt, who served as manager of corporate communication for Arkansas Electric Cooperatives from 1961 to 1987.

For WEC, this national recognition highlights both the strength of the 12-year campaign and the communities we serve across southwest and central Kansas.

“This campaign is a great example of how thoughtful, strategic communication can turn awareness into action,” said Alli Conine, director of member services and corporate communications. “By meeting our members where they are — across digital, print and in-person channels — we were able to make giving easy, meaningful and impactful for communities across our service territory.”

Power the Pantry (formerly Cram the Van) supports a dozen local food pantries across WEC's 14-county service territory. What began in 2014 as a traditional canned food drive to fill a red, extended passenger van, has grown into a strategic, cooperative-wide initiative focused on addressing food insecurity across the region in a more impactful way.

In 2023, WEC shifted its approach by redirecting its annual

campaign budget into a direct \$50,000 donation to partner food pantries. We then used a coordinated communications strategy to encourage members, employees, schools and business partners to help match — and exceed — that commitment.

In 2025, those efforts resulted in more than **\$130,203** raised to support local pantries (\$1=1 pound of food). Over two-thirds of contributions were monetary, allowing pantries to purchase needed items, reduce waste and respond quickly to changing demand.

The campaign's success reflects strong participation across WEC's service territory. Schools in **CONWAY SPRINGS** and **GREAT BEND**, key business partners such as **TYSON FRESH MEATS** and **GIFTING FORWARD** in Great Bend, and individual members all play a role — demonstrating a shared commitment to supporting our neighbors in need.

Led each fall by WEC's member services team, the campaign combines digital outreach, print communications, community partnerships and in-person engagement to reach members across a largely rural region. The approach emphasizes accessibility, consistency and clear messaging to encourage participation at many levels of giving.

While national recognition is significant, cooperative leaders say the impact at the local level remains the true measure of our success.

“This recognition is a reflection of the people we serve,” said Bruce W. Mueller, CEO/general manager. “Power the Pantry demonstrates what can happen when a community comes together with a shared purpose. We're proud of our team for leading this effort, but even more grateful to our trustees, members, partners and communities who make this impact possible year after year.”

At its core, Power the Pantry reflects the cooperative's commitment to the Seventh Cooperative Principle — **CONCERN FOR COMMUNITY** — and reinforces WEC's mission of **DELIVERING ENERGY FOR LIFE**.

As the campaign continues to grow, WEC remains focused on expanding our impact and supporting the food pantries that serve as a critical resource for families across its service territory.

Because when communities come together, the impact goes far beyond what any one organization can achieve alone.



WEC's Member Services team accepted the Chesnutt Award on May 5 in San Diego, California, at the 2026 NRECA Connect Conference. Pictured from left are Caitlin Moser, Samantha Garcia, Alli Conine, Mary Hoisington and Shajia Donecker. Conine leads the team.

IN HONOR OF THE
USA'S 250TH BIRTHDAY

Let's *Party* like it's **1776!**

at *Dry Lake Brewing* **JUNE 3** ★ 4-7 P.M.
1305 MAIN STREET IN GREAT BEND

SPECIALTY DRINKS • DOOR PRIZES • AMERICAN FARE

hosted by



GREAT BEND
CHAMBER OF COMMERCE
AFTER HOURS

POWER PLAY

JULY 15, 2026

GIVEAWAYS! PRIZES!

FREE HAMBURGERS & HOT DOGS TO THE FIRST 200 PEOPLE!

SERVING AT **6:30 P.M. CT** GAME START **7 P.M. CT**

AL BURNS MEMORIAL FIELD



**Our offices
will be closed
FRIDAY, JULY 3,
for the holiday.**



This is Wheatland ...

Continued from page 12A ▶

Read more about the election results on Page 12D.

During the meeting, we shared highlights from our **2025 FINANCIAL REPORT** and **ANNUAL SUMMARY**. It was, without question, a year worth celebrating — one defined by progress, resilience and a continued focus on serving you. Grounded in the Seven Cooperative Principles, WEC remains committed to service, innovation and community. Attendees received a copy of the **2025 ANNUAL REPORT**, and I encourage all members to review it and stay informed. Visit www.weci.net/annual-meeting to view.

We were also honored to recognize the next generation of WEC members. Congratulations to the 14 high school seniors awarded \$1,000 scholarships, as well as the students selected for the Electric Cooperative Youth Tour and Cooperative Youth Leadership Camp.

SCAN TO VIEW OUR

2025
FINANCIAL REPORT



ANNUAL MEETING
SUMMARY



Additionally, we recognized employees and trustees whose service ranges from five to 35 years — a testament to the people powering our cooperative.

Thank you for your continued trust and participation. If you have questions, please reach out to memberservices@weci.net. Together, **THIS IS WHEATLAND** — and 2025 was a year that deserves to be celebrated. With strong governance and engaged member participation, we remain committed to our mission of **DELIVERING ENERGY FOR LIFE.**

UNTIL NEXT TIME. TAKE CARE.

POWER PLAY
JULY 7, 2026

FIRST 50 FANS GET IN FREE!
FREE HAMBURGERS & HOT DOGS TO THE FIRST 200 PEOPLE!

SERVING AT **6 P.M. CT** GAME START **6:30 P.M. CT**

WHEATLAND ELECTRIC
 CLINT LIGHTNER FIELD

Delivering Energy for Life
 A Trueheart Energy Company